

KEEBRA PARK
STATE HIGH SCHOOL



SUAVE and STRUDDIES

Sizing Charts

For Formal, Sport and Academy Uniforms



KNOW



PERFORM



ACHIEVE

T 07 5509 2555 | F 07 5591 7256 | info@keebraparkshs.eq.edu.au
Anne St, Southport QLD 4215 | PO Box 40 Southport | keebraparkshs.eq.edu.au

The Department of Education and Training Trading as Education Queensland International (EQI) | CRICOS Provider No: 00608A

FORMAL AND SPORT UNIFORMS SAUVE SIZING CHARTS

As at 17 August 2020

SKIRT	Measurements	4	6	8	10	12	14	16	18	20	22	24	26	28
	1/2 WAIST	32	33	35	37	39	42	45	47	49	52	55	58	61
	LENGTH	50	51	52	53	54	54	55	55	55	55	56	56	56

FORMAL SHORTS	Measurements	4	6	8	10	12	14	16	82	87	92	97	102	107	112	117
	FULL WAIST	54.0	56.0	60.0	64.0	68.0	72.0	77.0	82.0	87.0	92.0	97.0	102.0	107.0	112.0	117.0
	HIP (7.5cm above crotch)	76.0	80.0	85.0	90.0	95.0	100.0	105.0	115.0	120.0	125.0	130.0	135.0	140.0	145.0	150.0
	LENGTH	38.5	40	43	46	47.5	49	50.5	52	53	54	55	56	57	58	59

BOYS' SHIRT	Measurements	3XS	2XS	XS	S	M	L	XL	2XL	3XL	4XL	5XL	6XL	7XL	8XL	9XL	10XL
	1/2 chest	46.5	48.5	50.5	52.5	54.5	56.5	59	61.5	64	66.5	68.5	70.5	72.5	74.5	76.5	78.5
	CB Length	63	65	68	71	75	78	81	84	87	90	93	96	99	102	105	108
	Neck Circumference	39	40	41	42	43	44	45	46	47	48	49	50	51	52	53	54

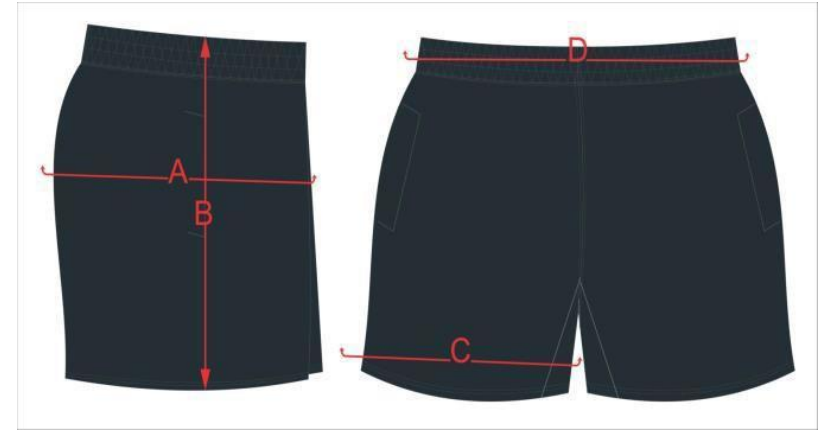
BLOUSE	Measurements	6	8	10	12	14	16	18	20	22	24	26
	1/2 Chest	45	47	50	52	54	56	60	62	64	66	68
	1/2 Waist	40	42	44	46	58	50	53	56	59	62	64

UNISEX POLO	Measurements	5XS	4XS	3XS	2XS	XS	S	M	L	XL	2XL	3XL	4XL	5XL	6XL	7XL
	Chest ½	40	42	44	46	48	50	53	56	59	62	65	68	71	74	77
	Length	56	60	62	64	66	68	70	72	74	76	78	80	82	84	86

**SPORT ACADEMY SHORTS
STRUDDIES SIZING CHARTS**

As at 17 August 2020

126SS SCHOOL SPORTS SHORTS



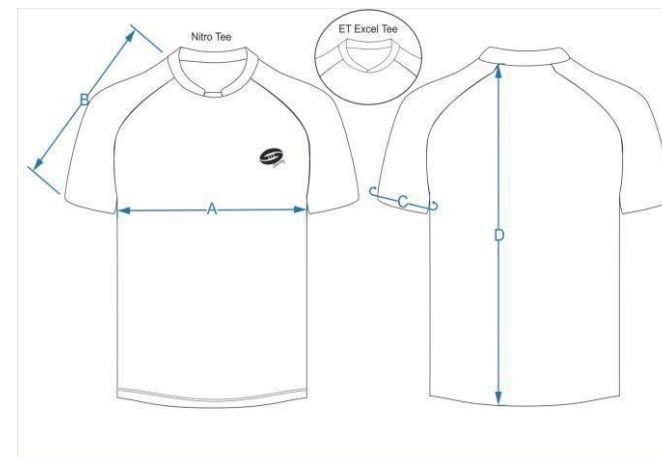
LADIES												
Finished measurement(mm)	4	6	8	10	12	14	16	18	20	22	24	26
(A)Hip	470	490	510	530	570	590	610	630	650	670	695	725
(B)Shots length	325	345	365	375	385	395	405	415	425	435	445	455
(C)Trousler legs	550	570	590	610	650	670	690	710	730	760	785	805
(D)Waist	600		640	680	720	760	800	840	880	920	960	1000

MEN															
Finished measurement(mm)	20	22	24	26	28	30	32	34	36	38	40	42	44	46	48
(A)Hip	440	470	490	520	540	565	590	620	640	670	695	720	745	770	795
(B)Shots length	340	350	360	370	380	390	400	410	420	430	440	450	460	470	480
(C)Trousler legs	510	535	560	590	620	645	670	700	725	755	780	805	830	860	885
(D)Waist	520		560	600	640	680	720	760	800	840	880	920	960	1000	1040

SPORT ACADEMY SHIRTS STRUDDIES SIZING CHARTS

As at 17 August 2020

124NT NITRO TEE



Ladies											
Finished measurement(mm)	W-4	W-6	W-8	W-10	W-12	W-14	W-16	W-18	W-20	W-22	W-24
(A)Half Chest	415	435	455	480	520	540	550	585	615	655	710
(B)Sleeve Length	225	250	255	270	295	300	330	335	350	385	420
(C)Cuff	270	280	290	300	310	320	330	340	360	380	420
(D)Clothes Length	555	575	595	610	630	655	685	695	705	720	735

Kids								
Finished measurement(mm)	2	4	6	8	10	12	14	
(A)Half Chest	370	390	410	445	475	495	515	
(B)Sleeve Length	275	295	310	330	345	365	370	
(C)Cuff	235	235	240	260	275	285	300	
(D)Clothes Length	525	535	550	585	630	650	690	

Mens													
Finished measurement(mm)	XS	S	M	L	XL	2XL	3XL	4XL	5XL	6XL	7XL	8XL	9XL
(A)Half Chest	505	530	555	580	605	630	655	675	695	720	745	770	795
(B)Sleeve Length	350	355	365	375	380	390	400	405	415	425	440	455	465
(C)Cuff	330	350	370	390	405	425	445	460	480	485	505	520	530
(D)Clothes Length	705	720	740	755	770	780	795	805	825	835	845	860	875

SPORT SINGLET STRUDDIES SIZING CHART

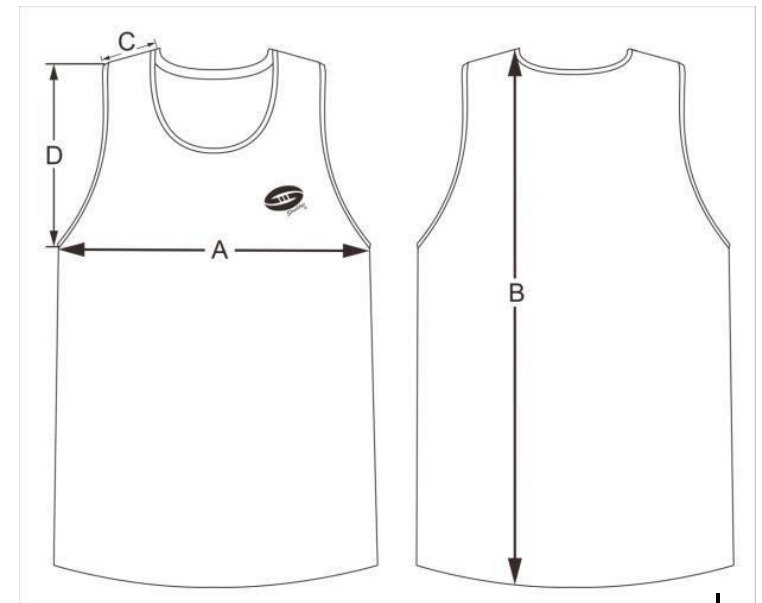
As at 17 August 2020

124PS Performance Singlet

TIP - Grab a garment you own that you are comfortable with the fit of, and measure the dimensions of it when it is laid out flat.

1/2 Chest Measurement – Taken from armpit to armpit

Length Measurement – Taken from the highest shoulder point to the bottom.



Mens		XS	S	M	L	XL	2XL	3XL	4XL	5XL	6XL	7XL
Finished measurement(mm)												
(A)Half Chest		510	530	550	570	600	630	650	670	690	705	720
(B)Clothes Length		685	705	725	745	765	785	800	815	830	845	855
(C)shoulder width		65	65	70	70	75	75	80	80	80	80	80
(D)Sleeve Diameter		240	245	255	260	260	265	270	275	280	285	290

Ladies		W-4	W-6	W-8	W-10	W-12	W-14	W-16	W-18	W-20	W-22	W-24
Finished measurement(mm)												
(A)Half Chest		390	405	430	455	475	495	525	560	590	630	685
(B)Clothes Length		585	610	635	660	685	710	725	745	755	770	780
(C)shoulder width		45	45	50	55	60	70	70	75	75	80	85
(D)Sleeve Diameter		185	195	205	220	225	235	245	260	265	270	270

Kids		0	1	2	4	6	8	10	12	14	16
Finished measurement(mm)											
(A)Half Chest		290	310	330	350	370	400	410	430	460	480
(B)Clothes Length		440	460	480	500	520	575	595	620	640	675
(C)shoulder width		60	60	60	60	62	62	63	63	68	73
(D)Sleeve Diameter		150	160	165	175	185	205	215	225	235	245