

Queensland State School Reporting – 2011

Keebra Park State High School (2046)



Postal address	PO Box 40 Southport 4215
Phone	(07) 5509 2555
Fax	(07) 5591 7256
Email	the.principal@keebraparkshs.eq.edu.au
Webpages	Additional reporting information pertaining to Queensland state schools is located on the My School website and the Department's Right to Information site .
Contact Person	Cameron Hodges

Principal's Foreword

Introduction

Keebra Park SHS has such a diverse student population. It is imperative that multiple options are available for our student population. Our school caters for students in many areas and is proud of its 'Personalised' Future Pathways Curriculum. This curriculum recognises the individual needs of our students and equips them for life after school. It supports our significant emphasis on academic achievement and achieving personal best performance across all aspects of school life. Our Future Pathways Curriculum allows young people to follow an Academic Pathway to University and further study or a Vocational Pathway to employment or further training. The Partnerships we have established to complement our Pathways are highly valued. These include our Universities, Business, Industry, Registered Training Organisations and the Wests Tigers NRL Club. The personalised approach we offer our young people provides support and guidance to follow an appropriate Pathway within an environment of care. I look forward to the further development of Keebra Park SHS as a school of choice for both domestic and international students.

School progress towards its goals in 2011

1. Teaching and Learning Audit recommendations actioned with explicit school strategies focussed on improvement.
2. Implementation of the Australian Curriculum and mandatory LOTE
3. Embrace and empower the system generated Curriculum into the Classrooms to leverage consistency and renewal for classroom practice and expectations
4. A comprehensive, transparent and focussed NAPLAN strategy to improve specific student cohorts inclusive of A&TSI students.
5. Implementation of developing Performance Plans for administrators and teaching staff.
6. Consolidation of One School as the operational environment for school data, plans and financial operations.
7. Every Day Counts – a relentless focus on improving student attendance.

The school introduced an Academic Excellence program for Year 8 for students in 2011 to complement the highly successful Sports Specialisation Program, this program has expanded in 2012. The enrolment growth in the Junior Secondary phase has continued with largest cohort in the school being the Year 9 cohort. The school improved our attendance from a base of 74% in 2010 to 86% in 2011. The school is expanding its VET offerings, providing multiple opportunities for our students to gain additional QCE points. The school has introduced a specific timetabled Literacy & Numeracy program for all students in Year 8 & 9. The Keebra Scorecard was introduced in 2011 with 5 key improvement goals: attendance, literacy, numeracy, assessment submission and academic progress.

Future out look

The key strategic directions of the School Strategic Plan for 2012 are:

1. Continue to improve the rates of student attendance.
2. Improve the Literacy and Numerary outcomes for students and focus on Reading in the Junior Secondary phase.
3. Provide performance feedback to every student in every class, every five weeks.
4. Continue to enrol the full range of students and improve public confidence in Keebra Park SHS.

The school is looking forward to continued academic improvement, improved attendance rates and junior secondary enrolment growth

School Profile

Coeducational or Single Sex: Coeducational

Year levels offered : 8 to 12

Total student enrolments for this school:

Total Enrolment	Girls	Boys	Enrolment Continuity (Feb 2011-Nov 2011)
706	229	477	83%

Characteristics of the student body:

Keebra Park State High School has a very multicultural student body with students from 64 different cultural backgrounds. The school has a male enrolment of 65% with a significant number of male students enrolled in the school's Sports Specialisation program. The school has a Pan Pacifica enrolment of approximately 65% from a range of Polynesian backgrounds. The school has a large number of ESL students due to the school being the intake school for ESL for the Gold Coast Region. The school traditionally has an enrolment that grows throughout the year

Class Sizes – Proportion of school classes achieving class size targets in 2011

Phase	Average Class Size
Prep-Year 3	0
Year 4 – Year 10	25
Year 11 – Year 12	19.6
All Classes	21.8

School Disciplinary Absence

Disciplinary Absences	Count of Incidents
Short Suspensions – 1 to 5 days	95
Long Suspension – 6 to 20 days	29
Exclusions	6
Cancellations of Enrolment	21

Curriculum Offerings

Our distinctive curriculum offerings:

- The Academic Excellence program for students in Years 8 was introduced in 2011, with a new cohort commencing in 2012
- 8 KLAs utilised as organisers of the Middle Phase Curriculum plus Manual Arts and Home Economics.
- Technology across the Curriculum from Yr 8 to Yr 12.
- Sports Specialisation in the areas of Rugby League for boys and Touch Football for Girls. Sports Specialisation is a subject offered in the Senior Phase, with Middle Phase students accessing it through Health and Physical Education.
- A Vocational Pathway for the Senior Phase involving Work Experience, School Based Traineeships and Apprenticeships with emphasis on Literacy and Numeracy is promoted. Ten Authority Registered Subjects are offered in Creative Arts, Early Childhood, Hospitality and Tourism, Information & Communication Technologies, Furnishing and Recreation. A majority of subjects have modules embedded which lead to a Certificate Qualification either at school or later with a RTO.
- A new senior subject – Licence for Life was introduced in 2011 together with a number of VET courses in Year 10.
- A strong academic tradition exists for the 25% of students who go on to Tertiary Education. 22 Authority subjects are offered in the areas of English, Humanities, Technology and Business, Mathematics, Science, The Arts. Physical Education, Graphics and Home Economics.
- Authority Registered Subjects are offered in Creative Arts, Early Childhood, Hospitality and Tourism, Information & Communication Technologies, Furnishing and Recreation.
- A new Senior Subject – Licence for Life was introduced in 2011 together with a number of VET courses in Year 10
- The school has added additional VET offerings in Sport Coaching and Outdoor Recreation to commence in 2012

Extra Curricula activities

- Academic Competitions: International English competition for schools, National Geographic Competition, Australian Mathematics Competition, Australasian Computing Competition, Australian Financial Literacy Assessment, Rio Tinto Big Science Competition, Royal Australian Chemical Institute National Chemistry Quiz, CSIRO Crest Awards, BHP Billiton Science Awards.
- Cultural Competitions: Gold Coast Drama Festival, Spotlight on Dance Education
- Sporting Competitions: Rugby League: 13 Years Broncos Steve Renouf Shield , 14 Years Broncos Michael Hancock Cup, 15 Years Broncos Powerade Kevin Walters Cup, Open A Broncos Powerade Allen Langer Trophy, Arrive Alive Cup, Open B Struddys Sports Level 2 Competition, Open C Gold Coast Titans Cup. Netball: Vicki Wilson Cup, Touch: SQBD Mixed Champions. All Schools Championships, Gold Coast Suns Cup
- Representatives in Broadwater: South Coast and Queensland School Sport Representative Teams.
- Band: Various Ensembles, Chess Club, Cultural dance groups

How Information and Communication Technologies are used to assist learning

Technology across the Curriculum is a major focus and the ratio of students to computers in 2011 was 2 to 1 from Yr 9 to 12. Information & Communication Technology (ICTs) are well used within the school and their use is embedded across all subjects. Computers are sited across the school in hubs (in most teaching blocks), in 3 Network Laboratories and in the Library. Internet connections are available in all teaching blocks, with wireless connectivity available throughout the school. The school introduced a new school intranet site – iKeebra in 2009 for staff and students, this has greatly enhanced the ability to share information for both staff and students. In 2011 the school introduced a new website, Facebook page and opened a Twitter account. The Academic Excellence class in Year 8 and Year 9 is a take home laptop program. A take home laptop program will be available for students in Year 11 and 12 in 2012.

Social Climate

Keebra Park State High School community is proud of the safe and caring environment it provides. It is a small school nestled in Australian bushland near to Southport CBD. 'Keebra' is an indigenous word which means 'a place of happy people'. Staff are very committed to providing a range of curricular and additional activities to encourage our students to experience success and enjoyment from participation.

The school is committed to improving learning outcomes for all students and providing opportunities which will prepare its young people for life after school. We are proud of and value the partnerships we have with parents, students and the wider community and believe 'Yes, you can at Keebra'. Year Coordinators and Home Group Teachers have daily contact with students to provide care and support. Student Support Services are offered by Guidance Officer, Youth Support Coordinator, Youth Pathways Officer, Aboriginal Liaison Officer, Pacific Islander Community Education Counsellor, International Coordinator, School Industry Liaison Officer and School Nurse. The 'Reach' program and the National Safe Schools Framework form the basis of the care program. The school is the centre of the Gold Coast English as a Second Language program and as such our teachers are highly skilled in working with students from an ESL background. The degree to which Keebra Park State High School provides a safe, supportive and caring learning environment is borne out in the 2011 School Opinion Survey data. This survey shows that 100% of parents agreed that their child was safe at this school and 100 % of parents agreed that their child is treated fairly at this school

Parent, Student and Teacher satisfaction with the school

School Opinion Surveys clearly indicate that all members of the school community at Keebra Park SHS have high levels of satisfaction with the school. There has been continued growth in staff morale and parent satisfaction. There is still scope for improvement in student satisfaction

Performance measure	Result 2011
Percentage of parents/caregivers satisfied that their child is getting a good education at school	94%
Percentage of students satisfied that they are getting a good education at school	64%
Percentage of parents/caregivers satisfied with their child's school	94%
Percentage of school workforce satisfied with access to professional development opportunities that relate to school and systemic initiatives	71%
Percentage of staff members satisfied with morale in the school	85%

Involving Parents in their Child's Education

The school had a marked increase in the attendance of parents for the two parent teacher evenings held in 2011 due to changes in the booking arrangements. The school also launched a revamped website as well as a school Facebook page and Twitter account. Parents are encouraged at all times to have personal contact with school staff and the Administration with every student enrolling in the school doing so via an appointment with the Principal. The school newsletter is published fortnightly and is distributed electronically to all parents. Parent Interviews and Parent Information Evenings are scheduled to encourage parents to be involved in their child's education. The Academic Excellence program ran four separate parent nights as well as individual performance review interviews for all students on a termly basis.

The school has a strong belief in creating a welcoming environment for parents as part of our supportive school environment. Parents are actively encouraged to participate in the education of their children. The Parents & Citizens Association provides parents with a venue to interact with other parents and to work with the school staff to develop initiatives within the school

Reducing the school's environmental footprint

Data is sourced from school's annual utilities return and is reliant on the accuracy of these returns

Environmental indicators, 2010-2011

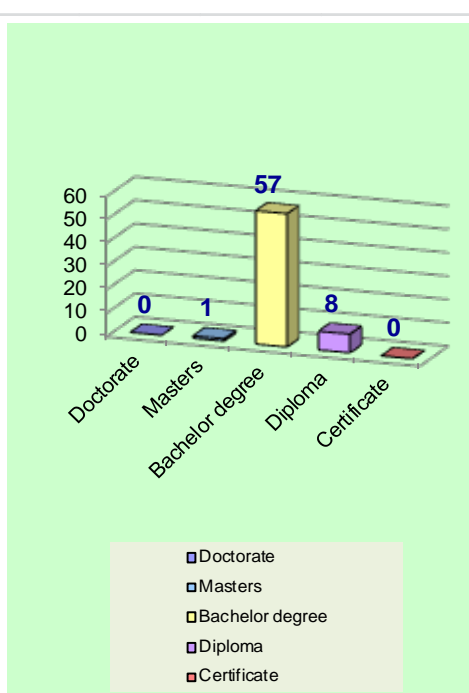
	Electricity kWh	Water KL
2011	337,796	9,829
2010	341,536	2,217
% change 10-11	-1%	343%

Our staff profile

Staff composition, including Indigenous staff

Workforce Composition	Teaching Staff	Non-Teaching Staff	Indigenous Staff
Head counts	66	29	<5
Full time equivalents	59	23	<5

Highest level of attainment	Number of classroom teachers and school leaders at the school
Doctorate	0
Masters	1
Bachelor degree	57
Diploma	8
Certificate	0



Expenditure on and Teacher participation in Professional Development

The total funds expended on teacher professional development in 2011 was \$27000

The major professional development initiatives are as follows:

Asbestos Awareness

Hidden Histories

National Curriculum – English, Maths, Science

Tactical Teaching of Reading

Technology in the classroom

The proportion of the teaching staff involved in professional development activities during 2011 was 100%

Our staff profile

Average Staff Attendance

For permanent and temporary staff and school leaders, the staff attendance rate was 96% in 2011

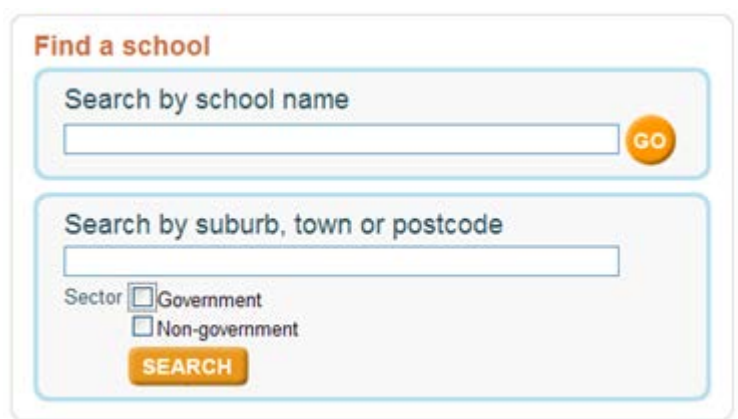
Proportion of staff retained from the previous school year

From the end of the previous school year, 100% staff was retained by the school for the entire 2011 school year

School income broken down by funding source

School income down by funding source is available visit the My School website at <http://www.myschool.edu.au/>.

To access the income details, click on the My School link above. You will then be taken to the My School website with the following "Find a school" text box



The screenshot shows a search interface titled "Find a school". It has two main search sections. The first section is "Search by school name" with a text input field and a yellow "GO" button. The second section is "Search by suburb, town or postcode" with a text input field, a "SEARCH" button, and two checkboxes: "Government" and "Non-government".

Where it says '**Search by school name**', type in the name of the school you wish to view, and select '<GO>'. Read and follow the instructions on the next screen; you will be asked to accept the **Terms of Use** and Privacy Policy before being given access to the school's My School entry web page.

School financial information is available by selecting '**School finances**' in the menu box in the top left corner of the school's entry web page. If you are unable to access the internet, please contact the school for a paper copy of income by funding source

Performance of our students

Key Student outcomes

Student Attendance – 2011

The overall attendance rate for the students at this school (shown as a percentage) in 2011 was 86%.

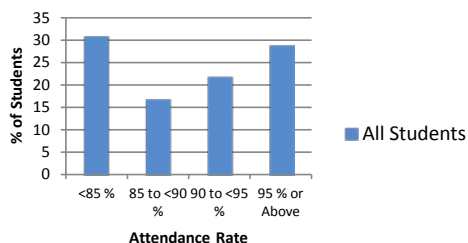
The overall attendance rate for all Queensland State Secondary Schools over the same period was 89%

Student attendance rate for each year level

Year 8	Year 9	Year 10	Year 11	Year 12
92%	84%	87%	82%	87%

Student Attendance Distribution

The proportions of students by attendance range.



Description of how non-attendance is managed by the school

Non-attendance is managed in state schools in line with the DET policies, SMS-PR-029: Managing Student Absences and SMS-PR-036: Roll Marking in State Schools, which outline processes for managing and recording student attendance and absenteeism.

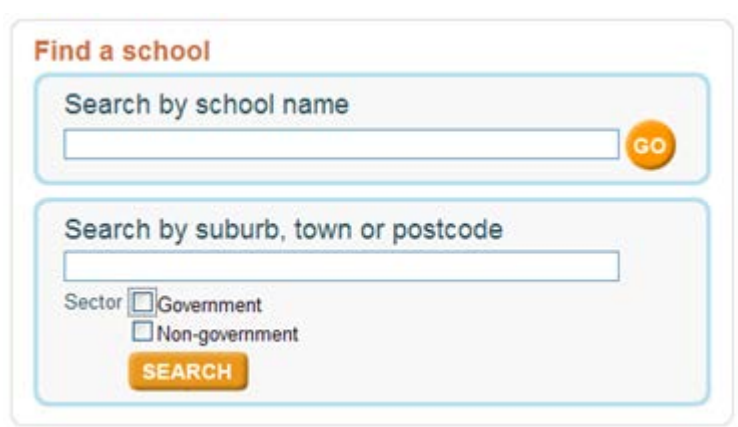
The school utilises the ID attend system which results in text messages being sent to parents on the day of a student's absence. Class teachers mark the roll electronically for every lesson as well as the roll being marked at home group at the start of each day. Letters are mailed home on a weekly basis to notify parents of any unexplained absences

The school launched the "Every day Counts at Keebra" initiative in 2011, this was supported by the appointment of a Learning Engagement Officer. The school has significant improvement in student attendance in 2011.

National Assessment Program-Literacy and Numeracy (NAPLAN) results – our reading, writing, spelling, grammar and punctuation, and numeracy results for the Years 3, 5, 7 and 9.

Our reading, writing, spelling, grammar and punctuation, and numeracy results for the Years 3, 5, 7 and 9 are available via the My School website at <http://www.myschool.edu.au/>.

To access our NAPLAN results, click on the *My School* link above. You will then be taken to the *My School* website with the following '**Find a school**' text box.



The screenshot shows a search interface titled "Find a school". It contains two main search sections. The first section is "Search by school name", which includes a text input field and a yellow "GO" button. The second section is "Search by suburb, town or postcode", which includes a text input field, a "Sector" label with two radio button options: "Government" and "Non-government", and a yellow "SEARCH" button.

Where it says '**Search by school name**', type in the name of the school whose NAPLAN results you wish to view, and select <GO>.

Read and follow the instructions on the next screen; you will be asked to accept the **Terms of Use** and Privacy Policy before being able to access NAPLAN data.

If you are unable to access the internet, please contact the school for a paper copy of our school's NAPLAN results.

Achievement-Closing the Gap

We had 33 Indigenous students enrolled at Keebra Park State High School in 2011. In Year 8 our indigenous student achievement in Maths, Science and English (C or better in all three) was 66% in comparison to our non-indigenous achievement of 61%. In Year 10 our indigenous student achievement in Maths, Science and English (C or better in all three) was 50% in comparison to our non-indigenous achievement of 31%. The school was invited to participate in the AIME (Australian Indigenous Mentoring Experience) program in 2011 and also hosted an AIME homework centre. The school vice-captain of 2011 was a proud indigenous young lady who went on to University studies At Griffith University in 2012. Attendance rates for the entire school improved in 2011 however a gap still exists between indigenous and non-indigenous students. Keebra Park's retention of indigenous students decreased in 2011.

Apparent retention rates Year 10 to Year 12

Year 12 student enrolment as a percentage of the Year 10 student cohort is 119%

Outcomes for our Year 12 cohort of 2011

Number of students receiving a Senior Statement	122
Number of students awarded a Queensland Certificate Individual Achievement	0
Number of students receiving an Overall Position (OP).	21
Number of students who are completing/continuing a School-based Apprenticeship or Traineeship.	35
Number of students awarded one or more Vocational Educational Training qualifications	106
Number of students awarded an Australian Qualification Framework (AQF) Certificate II or above	69
Number of students awarded a Queensland Certificate of Education at the end of Year 12	79
Number of students awarded an International Baccalaureate Diploma (IBD).	0
Percentage of OP/ IBD eligible students with OP 1-15 or an IBD	90%
Percentage of Year 12 students who are completing or completed a SAT or were awarded one or more of the following: QCE, IBD, VET qualification	98%
Percentage of Queensland Tertiary Admissions Centre (QTAC) applicants receiving an offer	97%

Our staff profile

Overall Position Bands (OP)

Number of students in each Band for OP 1 to 25

OP 1-5	OP 6-10	OP 11-15	OP 16-20	OP 21-25
2	11	6	2	0

Vocational Educational Training Qualification (VET)

Number of students awarded certificated under the Australian Qualification Framework (AQF)

Certificate I	Certificate II	Certificate III or above
94	52	21

The school offered two Certificate 1 courses in 2011 including a Certificate 1 in Information Technology and a Certificate 1 in Recreation. A Certificate 1 in Furnishing and a Certificate 1 in Manufacturing will be offered in 2012

Post school destination information

At the time of publishing this School Annual Report, the results of the 2011 Year 12 post-school destinations survey, *Next Step – Student Destination Report* for the school were not available. Information about these post-school destinations of our students will be incorporated into this Report in September

Early leavers information

The destinations of young people who left the school in Years 10, 11 and prior to completing Year 12, Early leavers are counseled and then referred to alternate education providers based on their needs and perceived pathways. Most early leavers tend to complete Get Set for Work programs, fulltime Traineeships, fulltime Apprenticeships or move into full time work. A component of our early leavers return overseas.